

MASTER PLAN PROPOSED LANDUSE MAP (2041)

(Erode Corporation)

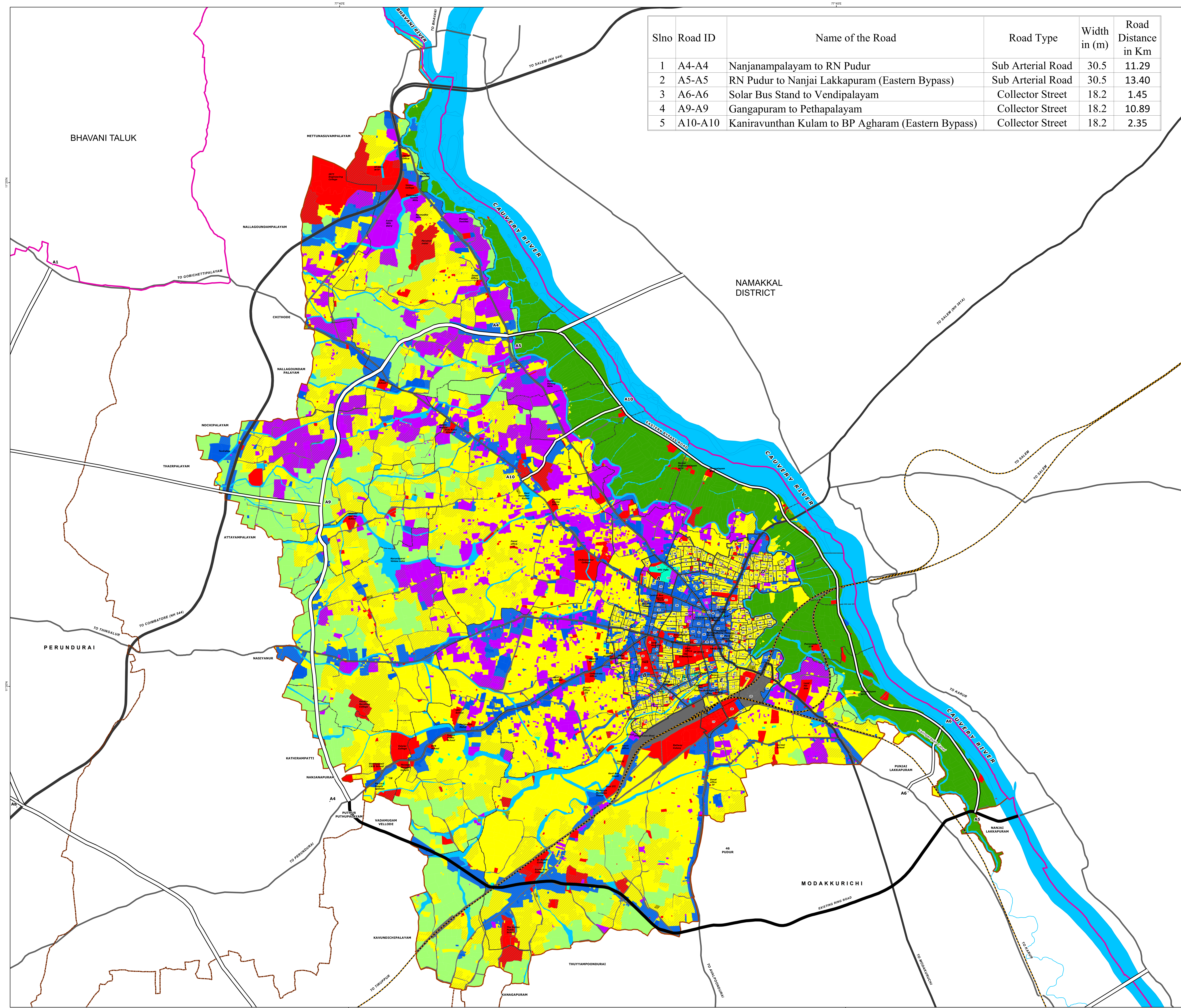
**ERODE
LOCAL PLANNING AREA**

LEGEND

- LOCAL PLANNING AREA BOUNDARY
- CORPORATION BOUNDARY
- TALUK BOUNDARY
- VILLAGE BOUNDARY
- WARD BOUNDARY
- BLOCK BOUNDARY
- NATIONAL HIGHWAYS
- STATE HIGHWAYS
- RAILWAY LINE
- WATERBODIES

- ### LANDUSE ZONE
- | EXISTING | PROPOSED |
|-------------------------|-------------------------|
| RESIDENTIAL | RESIDENTIAL |
| COMMERCIAL | COMMERCIAL |
| INDUSTRIAL | INDUSTRIAL |
| INSTITUTIONAL | INSTITUTIONAL |
| OPEN SPACE RECREATIONAL | OPEN SPACE RECREATIONAL |
| TRANSPORTATION | TRANSPORTATION |
| AGRICULTURE DRY | AGRICULTURE DRY |
| AGRICULTURE WET | AGRICULTURE WET |

S/no	Road ID	Name of the Road	Road Type	Width in (m)	Road Distance in Km
1	A4-A4	Nanjanampalayam to RN Pudur	Sub Arterial Road	30.5	11.29
2	A5-A5	RN Pudur to Nanjai Lakkapuram (Eastern Bypass)	Sub Arterial Road	30.5	13.40
3	A6-A6	Solar Bus Stand to Vendipalayam	Collector Street	18.2	1.45
4	A9-A9	Gangapuram to Pethapalayam	Collector Street	18.2	10.89
5	A10-A10	Kaniravunthan Kulam to BP Agharam (Eastern Bypass)	Collector Street	18.2	2.35



MEMBER SECRETARY (i/c) ERODE LOCAL PLANNING AUTHORITY, ERODE DISTRICT.	DEPUTY DIRECTOR (i/c) DISTRICT TOWN AND COUNTRY PLANNING ERODE DISTRICT.
ASSISTANT DIRECTOR DIRECTORATE OF TOWN & COUNTRY PLANNING, CHENNAI.	DEPUTY DIRECTOR DIRECTORATE OF TOWN & COUNTRY PLANNING, CHENNAI.
JOINT DIRECTOR OF DIRECTORATE OF TOWN & COUNTRY PLANNING, CHENNAI.	
DIRECTOR DIRECTORATE OF TOWN & COUNTRY PLANNING, CHENNAI.	
SECRETARY TO GOVERNMENT, HOUSING AND URBAN DEVELOPMENT, GOVERNMENT OF TAMILNADU.	
1:17,000	
0 0.225 0.45 0.9 1.35 1.8 Kilometers	
PREPARED BY ERODE LOCAL PLANNING AUTHORITY	
DIRECTORATE OF TOWN & COUNTRY PLANNING-TAMILNADU	