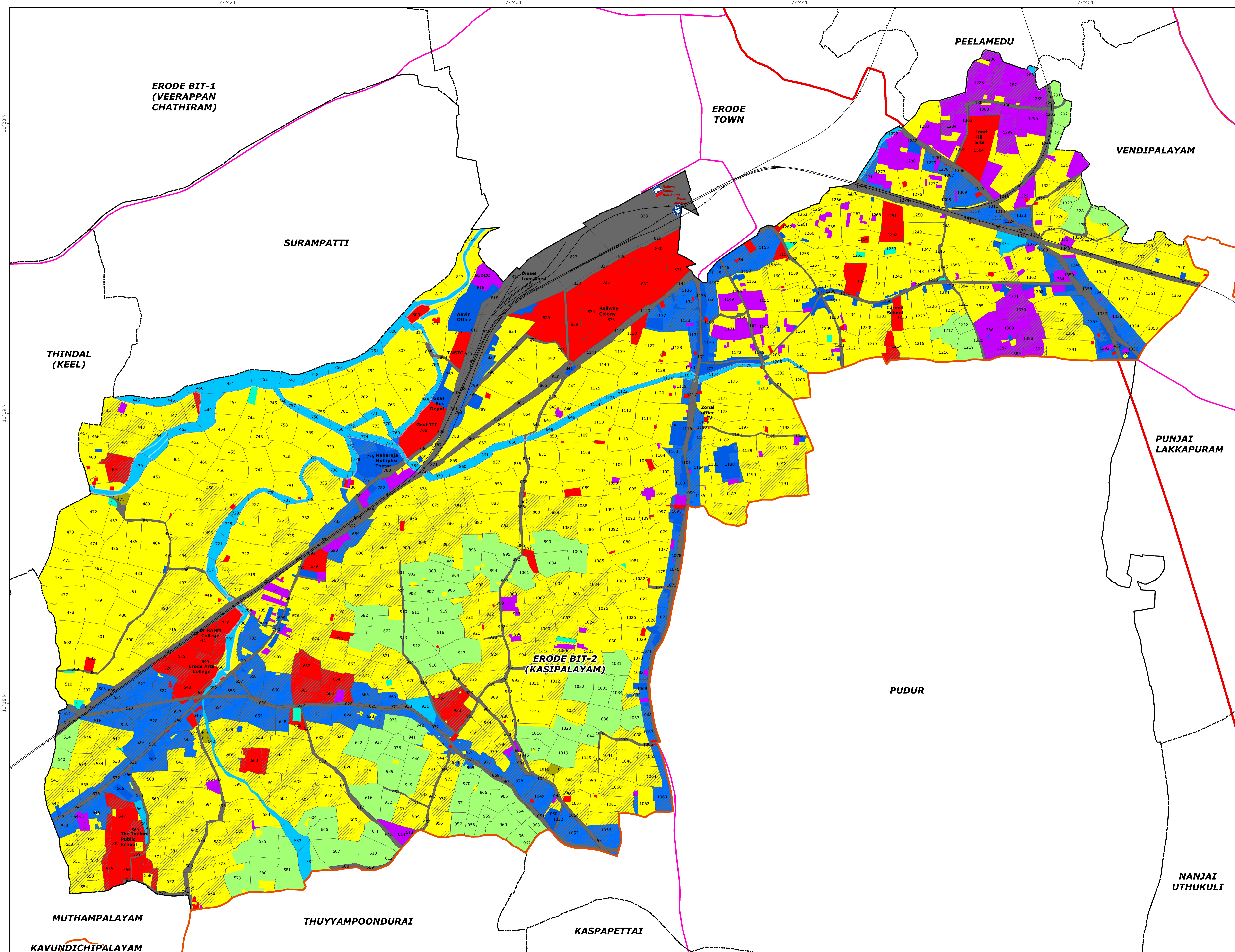


# ERODE BIT-2 (KASIPALAYAM)

## PROPOSED LANDUSE MAP

**VILLAGE NO -6**

**ERODE  
CORPORATION**



**Legend**

- LPA Boundary
- ErodeCorporationBdy
- Taluk boundary
- Village boundary
- Survey boundary
- National Highways
- State Highways
- Railway Line
- Waterbody Buffer Zone
- Proposed Residential
- Proposed Commercial
- Proposed Industrial
- Proposed Institutional
- Proposed Road
- Residential
- Commercial
- Industrial
- Institutional
- Open Space Recreational
- Agricultural Dry
- Agricultural Wet
- Burial Ground
- Transport
- Waterbodies

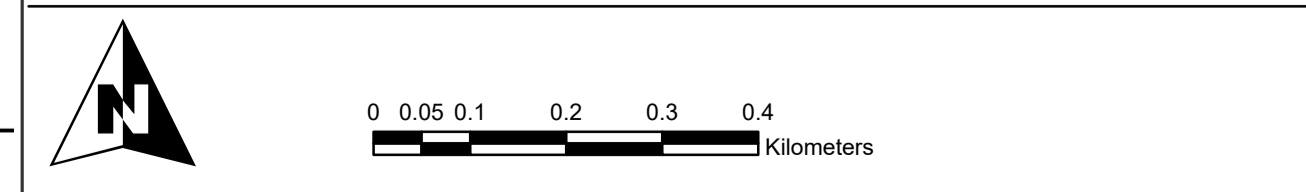
MEMBER SECRETARY  
ERODE LOCAL PLANNING AUTHORITY,  
ERODE.

DEPUTY DIRECTOR OF  
DISRICT TOWN AND COUNTRY PLANNING  
ERODE.

JOINT DIRECTOR OF  
DIRECTORATE OF TOWN & COUNTRY PLANNING,  
CHENNAI.

DIRECTOR OF  
TOWN AND COUNTRY PLANNING, CHENNAI.

PRINCIPAL SECRETARY TO GOVERNMENT,  
HOUSING AND URBAN DEVELOPMENT,  
GOVERNMENT OF TAMILNADU.



# ERODE LOCAL PLANNING AREA

PREPARED BY  
ERODE LOCAL PLANNING AUTHORITY  
DIRECTORATE OF TOWN  
& COUNTRY PLANNING-TAMILNADU

