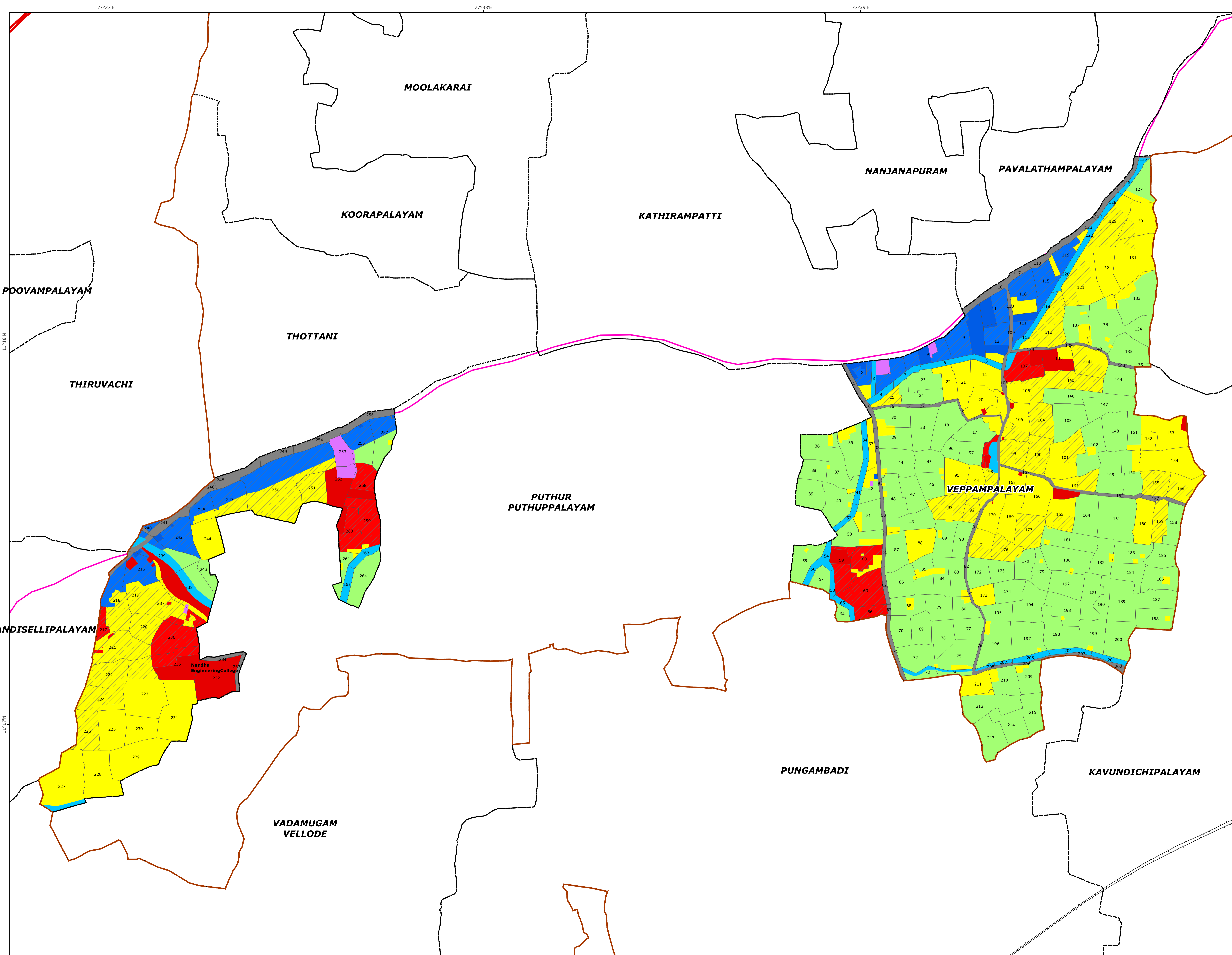


# VEPPAMPALAYAM

## PROPOSED LANDUSE MAP

VILLAGE NO -20

ERODE TALUK



**Legend**

- LPA Boundary
- Erode Corporation Bdy
- Taluk boundary
- Village boundary
- Survey boundary
- National Highways
- State Highways
- Railway Line

**Proposed Landuse**

- Proposed Commercial
- Proposed Industrial
- Proposed Institutional
- Proposed Residential
- Proposed Road

**Existing Landuse**

- Residential
- Burial Ground
- Commercial
- Institutional
- Industrial
- Open spaces and Recreation
- Agricultural Wet
- Agricultural Dry
- Roads
- Railway
- Quarry
- Hillock
- Reserved Forest
- Waterbody; Waterbodies

MEMBER SECRETARY  
ERODE LOCAL PLANNING AUTHORITY,  
ERODE.

DEPUTY DIRECTOR OF  
DISRICT TOWN AND COUNTRY PLANNING  
ERODE.

JOINT DIRECTOR OF  
DIRECTORATE OF TOWN & COUNTRY PLANNING,  
CHENNAI.

DIRECTOR OF  
TOWN AND COUNTRY PLANNING, CHENNAI.

PRINCIPAL SECRETARY TO GOVERNMENT,  
HOUSING AND URBAN DEVELOPMENT,  
GOVERNMENT OF TAMILNADU.

0 0.05 0.1 0.2 0.3 0.4  
Kilometers