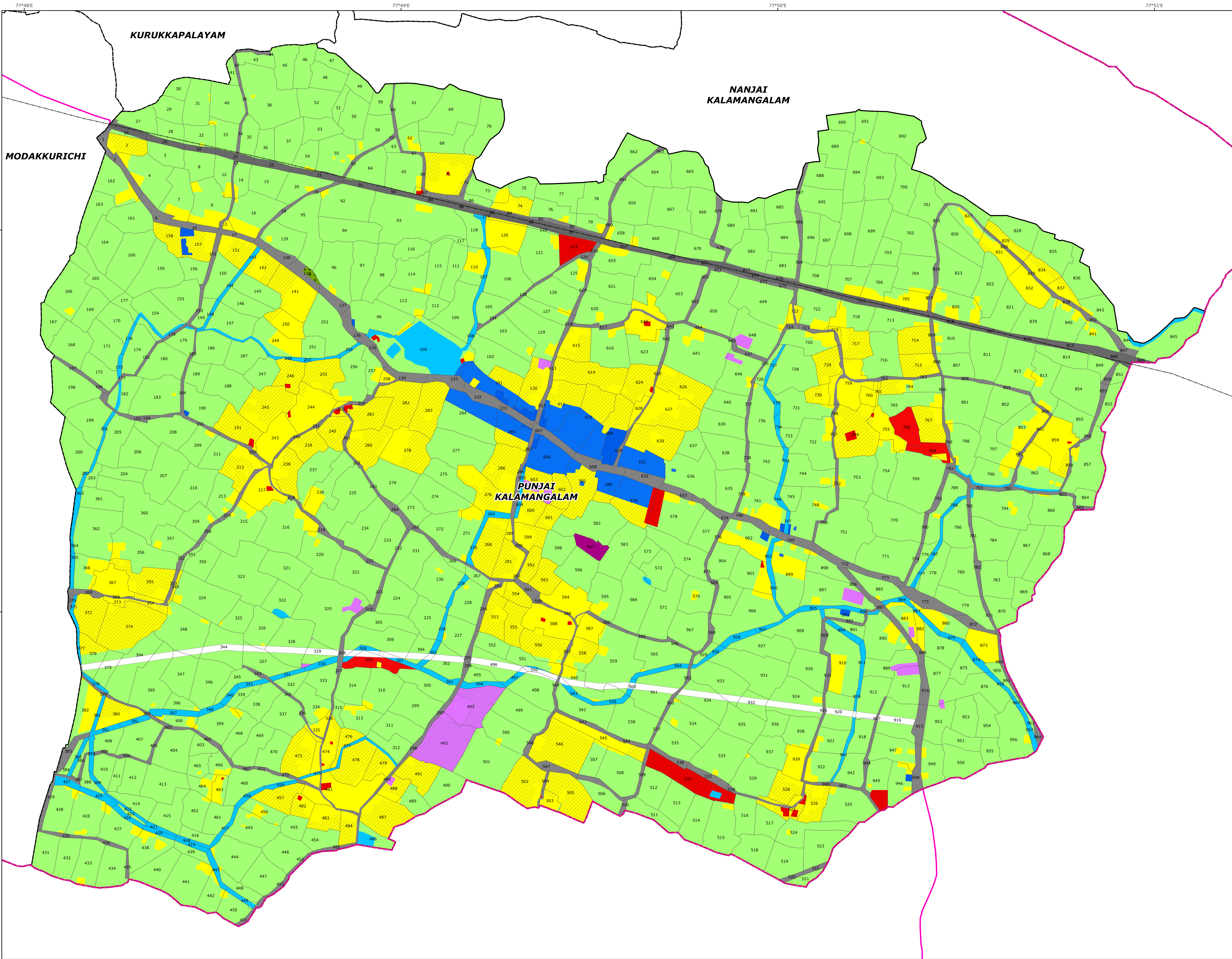


PUNJAI KALAMANGALAM



PROPOSED LANDUSE MAP

VILLAGE NO -12

MODAKURICHI TALUK

Legend

- LPA Boundary
- ErodeCorporationBdy
- Taluk boundary
- Village boundary
- Survey boundary
- National Highways
- State Highways
- Railway Line
- Proposed Landuse**
 - Proposed Commercial
 - Proposed Industrial
 - Proposed Institutional
 - Proposed Residential
 - Proposed Road
- Existing Landuse**
 - Residential
 - Burial Ground
 - Commercial
 - Institutional
 - Industrial
 - Open spaces and Recreation
 - Agricultural Wet
 - Agricultural Dry
 - Roads
 - Railway
 - Quarry
 - Hillock
 - Reserved Forest
 - Waterbody; Waterbodies

MEMBER SECRETARY
ERODE LOCAL PLANNING AUTHORITY,
ERODE.

DEPUTY DIRECTOR OF
DISRICT TOWN AND COUNTRY PLANNING
ERODE.

JOINT DIRECTOR OF
DIRECTORATE OF TOWN & COUNTRY PLANNING,
CHENNAI.

DIRECTOR OF
TOWN AND COUNTRY PLANNING, CHENNAI.

PRINCIPAL SECRETARY TO GOVERNMENT,
HOUSING AND URBAN DEVELOPMENT,
GOVERNMENT OF TAMILNADU.

PREPARED BY
ERODE LOCAL PLANNING AUTHORITY
DIRECTORATE OF TOWN
& COUNTRY PLANNING-TAMILNADU

