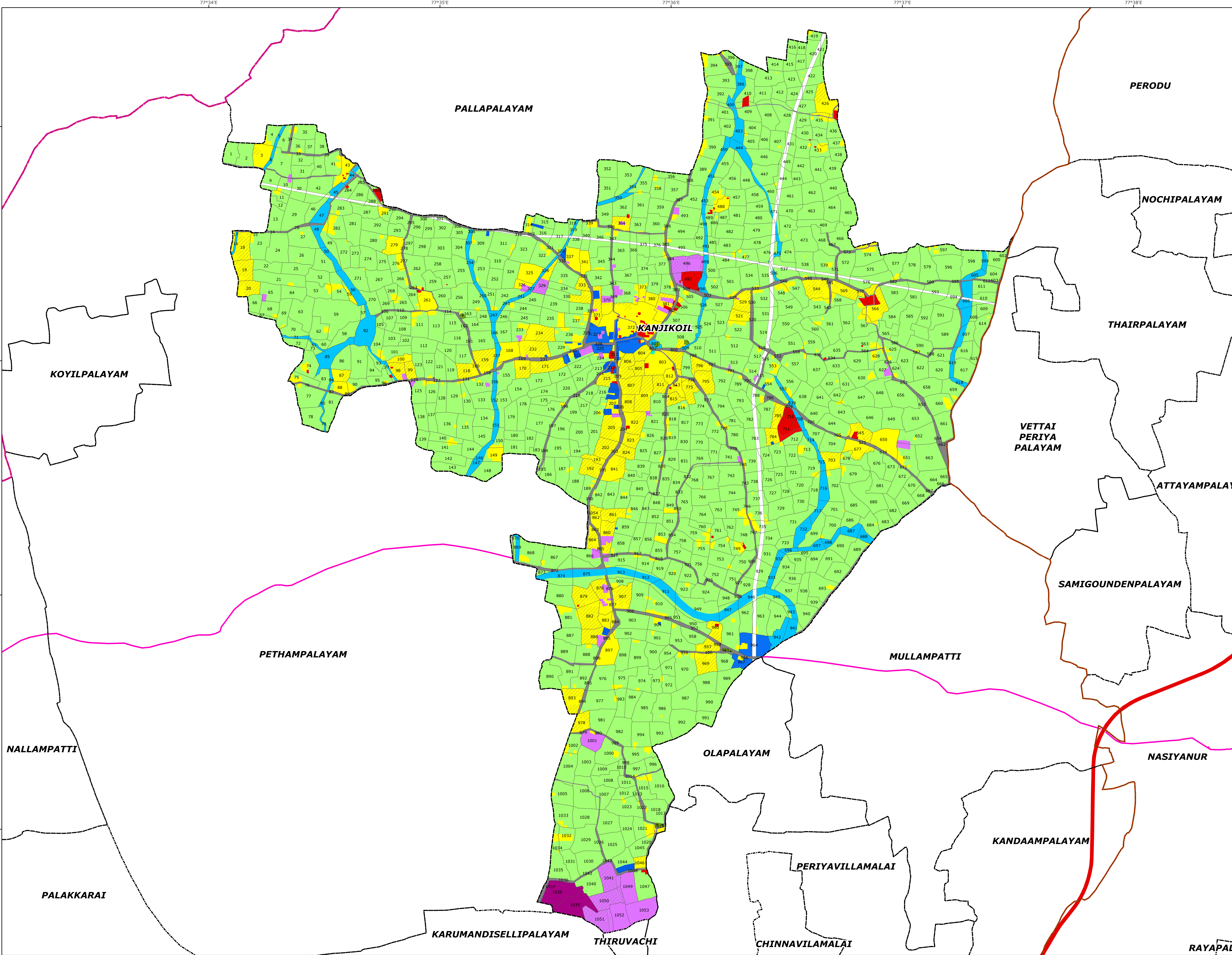


KANJIKOIL

PROPOSED LANDUSE MAP

VILLAGE NO -12

PERUNDURAI TALUK



Legend

- LPA Boundary
- Erode Corporation Bdy
- Taluk boundary
- Village boundary
- Survey boundary
- National Highways
- State Highways
- Railway Line

Proposed Landuse

- Proposed Commercial
- Proposed Industrial
- Proposed Institutional
- Proposed Residential
- Proposed Road

Existing Landuse

- Residential
- Burial Ground
- Commercial
- Institutional
- Industrial
- Open spaces and Recreation
- Agricultural Wet
- Agricultural Dry
- Roads
- Railway
- Quarry
- Hillock
- Reserved Forest
- Waterbody; Waterbodies

ERODE LOCAL PLANNING AREA

MEMBER SECRETARY ERODE LOCAL PLANNING AUTHORITY, ERODE.	DEPUTY DIRECTOR OF DISRICT TOWN AND COUNTRY PLANNING ERODE.
JOINT DIRECTOR OF DIRECTORATE OF TOWN & COUNTRY PLANNING, CHENNAI.	
DIRECTOR OF TOWN AND COUNTRY PLANNING, CHENNAI.	
PRINCIPAL SECRETARY TO GOVERNMENT, HOUSING AND URBAN DEVELOPMENT, GOVERNMENT OF TAMILNADU.	
0 0.075 0.15 0.3 0.45 0.6 Kilometers	
PREPARED BY ERODE LOCAL PLANNING AUTHORITY DIRECTORATE OF TOWN & COUNTRY PLANNING-TAMILNADU	
DTCP	