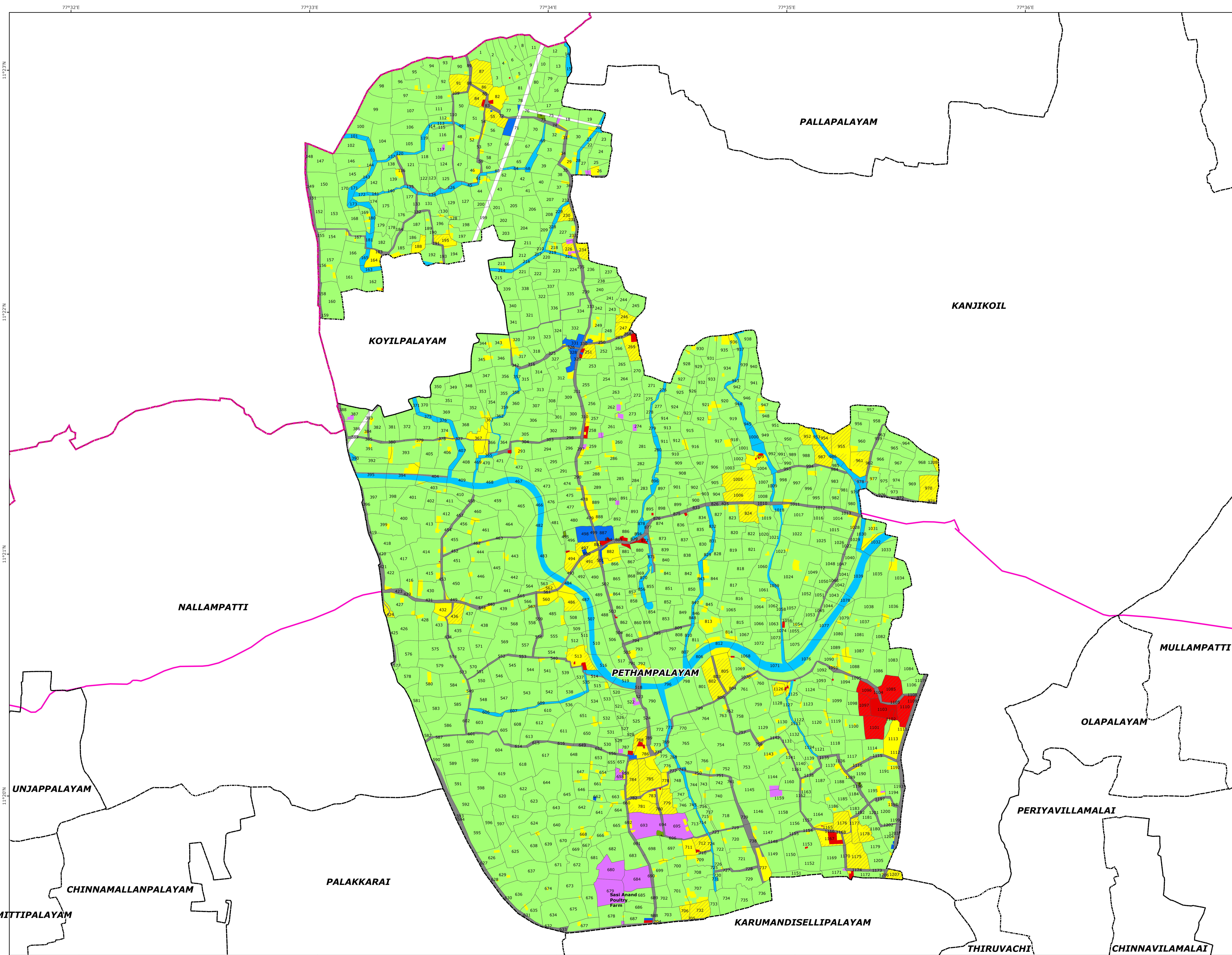


PETHAMPALAYAM

PROPOSED LANDUSE MAP

VILLAGE NO -35
PERUNDURAI TALUK



Legend

- LPA Boundary
- Erode Corporation Bdy
- Taluk boundary
- Village boundary
- Survey boundary
- National Highways
- State Highways
- Railway Line

Proposed Landuse

- Proposed Commercial
- Proposed Industrial
- Proposed Institutional
- Proposed Residential
- Proposed Road

Existing Landuse

- Residential
- Burial Ground
- Commercial
- Institutional
- Industrial
- Open spaces and Recreation
- Agricultural Wet
- Agricultural Dry
- Roads
- Railway
- Quarry
- Hillock
- Reserved Forest
- Waterbody; Waterbodies

MEMBER SECRETARY
ERODE LOCAL PLANNING AUTHORITY,
ERODE.

DEPUTY DIRECTOR OF
DISRICT TOWN AND COUNTRY PLANNING
ERODE.

JOINT DIRECTOR OF
DIRECTORATE OF TOWN & COUNTRY PLANNING,
CHENNAI.

DIRECTOR OF
TOWN AND COUNTRY PLANNING, CHENNAI.

PRINCIPAL SECRETARY TO GOVERNMENT,
HOUSING AND URBAN DEVELOPMENT,
GOVERNMENT OF TAMILNADU.

0 0.075 0.15 0.3 0.45 0.6
Kilometers

PREPARED BY
ERODE LOCAL PLANNING AUTHORITY

DIRECTORATE OF TOWN
& COUNTRY PLANNING-TAMILNADU

DTCP