

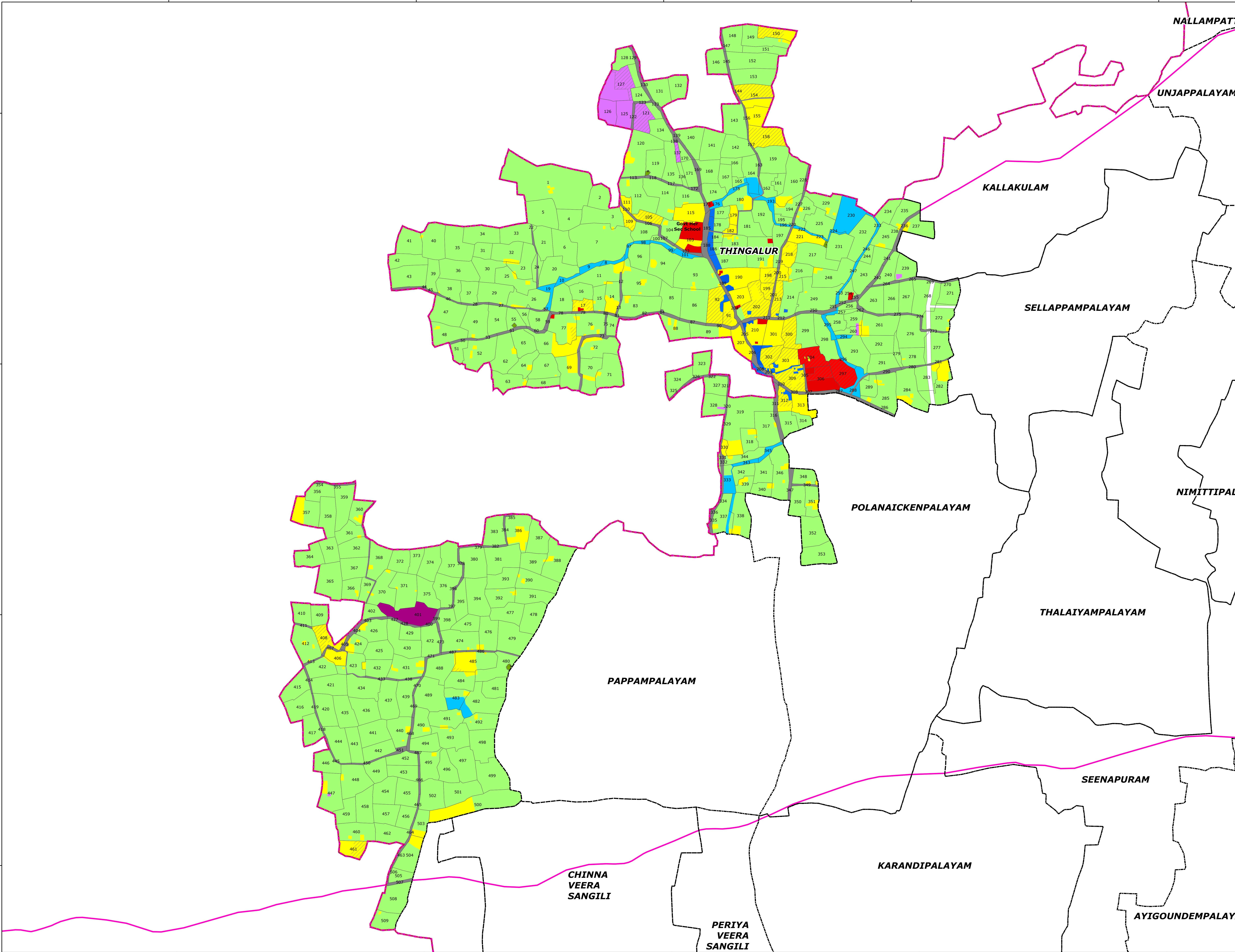
# THINGALUR

77°27'E 77°28'E 77°29'E 77°30'E 77°31'E

## PROPOSED LANDUSE MAP

### VILLAGE NO -45

### PERUNDURAI TALUK



#### Legend

- LPA Boundary
- Erode Corporation Bdy
- Taluk boundary
- Village boundary
- Survey boundary
- National Highways
- State Highways
- Railway Line

#### Proposed Landuse

- Proposed Commercial
- Proposed Industrial
- Proposed Institutional
- Proposed Residential
- Proposed Road

#### Existing Landuse

- Residential
- Burial Ground
- Commercial
- Institutional
- Industrial
- Open spaces and Recreation
- Agricultural Wet
- Agricultural Dry
- Roads
- Railway
- Quarry
- Hillock
- Reserved Forest
- Waterbody; Waterbodies

MEMBER SECRETARY  
ERODE LOCAL PLANNING AUTHORITY,  
ERODE.

DEPUTY DIRECTOR OF  
DISRICT TOWN AND COUNTRY PLANNING  
ERODE.

JOINT DIRECTOR OF  
DIRECTORATE OF TOWN & COUNTRY PLANNING,  
CHENNAI.

DIRECTOR OF  
TOWN AND COUNTRY PLANNING, CHENNAI.

PRINCIPAL SECRETARY TO GOVERNMENT,  
HOUSING AND URBAN DEVELOPMENT,  
GOVERNMENT OF TAMILNADU.

