

THUDUPPATHI

77°33'E

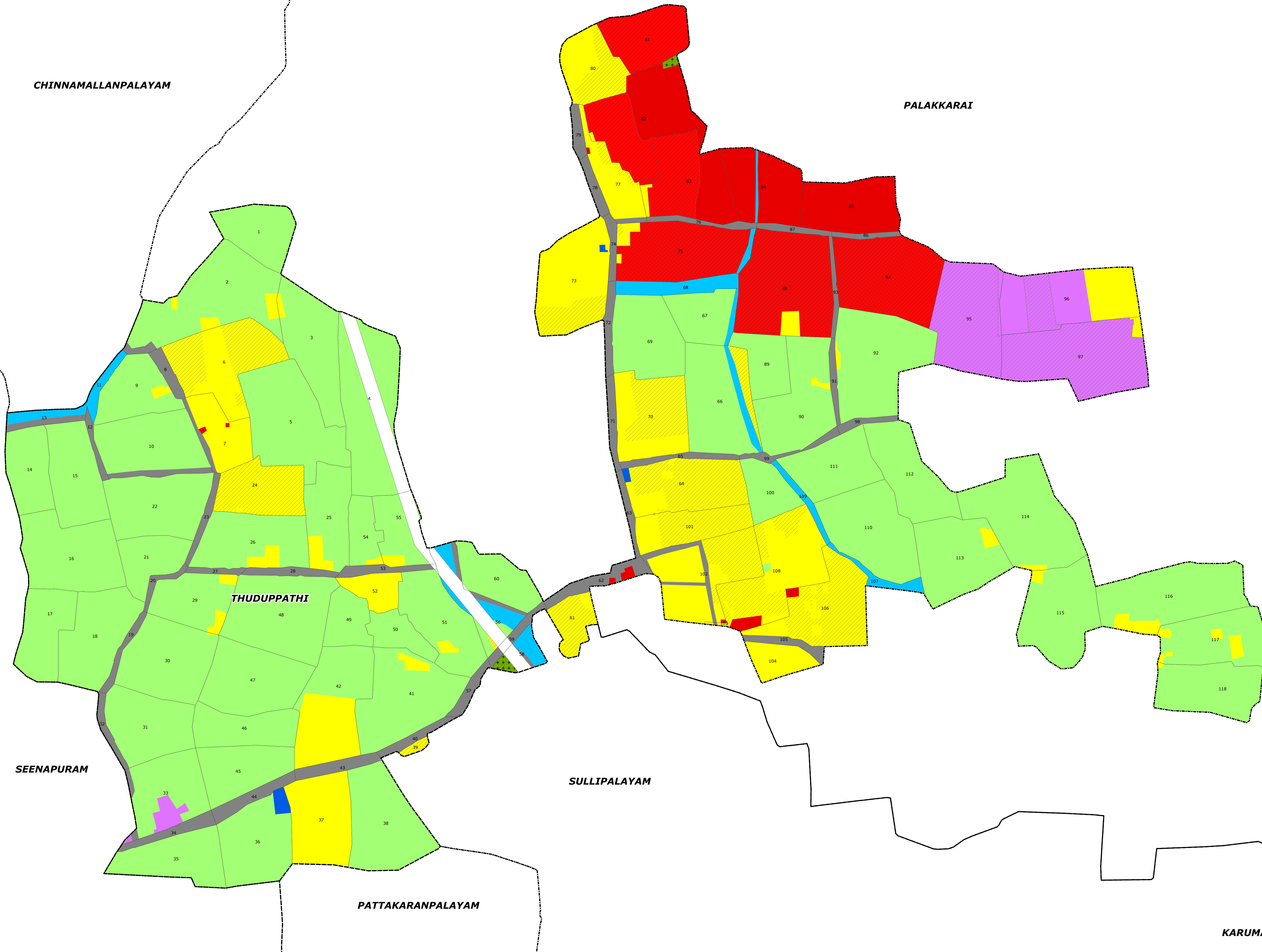
PROPOSED LANDUSE MAP

VILLAGE NO -47

PERUNDURAI TALUK

CHINNAMALLANPALAYAM

PALAKKARAI



Legend

- LPA Boundary
 - Erode Corporation Bdy
 - Taluk boundary
 - Village boundary
 - Survey boundary
 - National Highways
 - State Highways
 - Railway Line
- Proposed Landuse**
- Proposed Commercial
 - Proposed Industrial
 - Proposed Institutional
 - Proposed Residential
 - Proposed Road
- Existing Landuse**
- Residential
 - Burial Ground
 - Commercial
 - Institutional
 - Industrial
 - Open spaces and Recreation
 - Agricultural Wet
 - Agricultural Dry
 - Roads
 - Railway
 - Quarry
 - Hillock
 - Reserved Forest
 - Waterbody; Waterbodies

11°18'N

77°33'E

KARUMANDIS

ERODE LOCAL PLANNING AREA

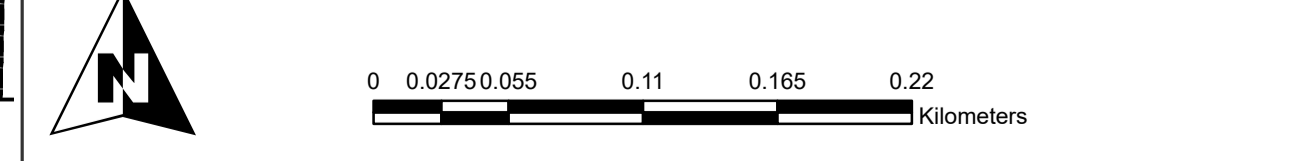
MEMBER SECRETARY
ERODE LOCAL PLANNING AUTHORITY,
ERODE.

DEPUTY DIRECTOR OF
DISTRICT TOWN AND COUNTRY PLANNING
ERODE.

JOINT DIRECTOR OF
DIRECTORATE OF TOWN & COUNTRY PLANNING,
CHENNAI.

DIRECTOR OF
TOWN AND COUNTRY PLANNING, CHENNAI.

PRINCIPAL SECRETARY TO GOVERNMENT,
HOUSING AND URBAN DEVELOPMENT,
GOVERNMENT OF TAMILNADU.



PREPARED BY
ERODE LOCAL PLANNING AUTHORITY

DIRECTORATE OF TOWN
& COUNTRY PLANNING-TAMILNADU

DTCP